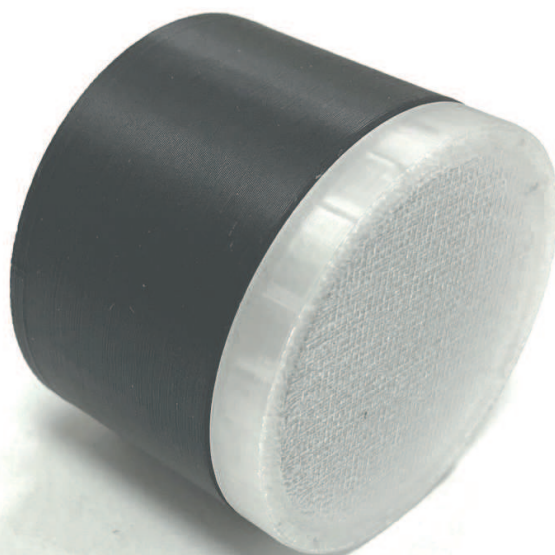


BREMI

GERMAN TECHNOLOGY SINCE 1927

Led buzzer on board



User's Manual

Technologie für Sicherheit – Technology for Safety

Thank you for choosing a BREMI product

The Led/Buzzer on Board device replicates and amplifies the visual and audible indications of EV-SAFE and EV-SAFE Rescue, depending on the current security status.

The use of Led/Buzzer on Board (Art. EVSLED02) is reserved for qualified personnel only
This product is designed exclusively as an accessory for EV-SAFE and EV-SAFE Rescue devices

LED/BUZZER ON BOARD - EVSLED02

The function of the **Led/Buzzer on Board** is to replicate and amplify the visual and acoustic indications of the EV-SAFE depending on the current security status.

The **Led/Buzzer on Board** flashing light is plugged directly onto the 8-pin connector of the EV-SAFE and EV-SAFE Rescue.



ATTENTION! The insertion direction is unique, do not force and pay attention to the correct orientation of the Led/Buzzer on Board **reference notch** (upwards);

N.B. Led/Buzzer on Board only works in conjunction with models: EVSAFE02, EVSRES0x

General terms of use and safety are included in the original instructions for EV-SAFE and EV-SAFE Rescue.

BREMI Fahrzeug-Elektrik GmbH
Einsteinstr. 1

D-71083 Herrenberg
+49 7032 955 30 0
+49 7032 955 30 30

www.ev-safe.eu

REV. 01/25